



**Transelectrica®**  
Societate Administrată în Sistem Dualist

# **MARKET MONITORING REPORT**

## **Balancing Market**

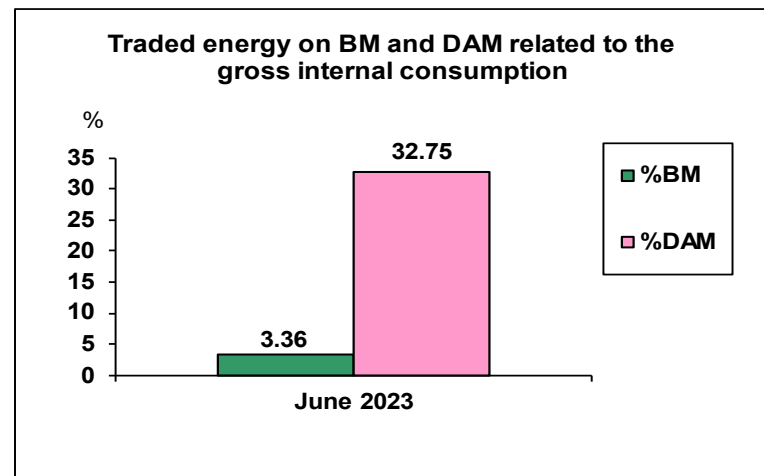
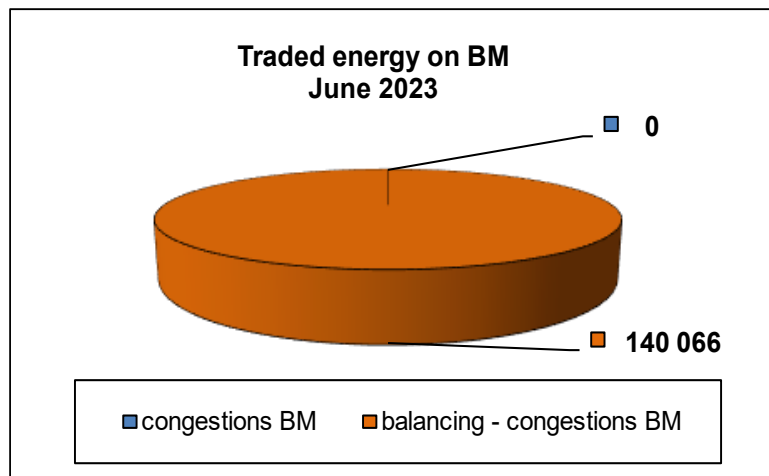
### **June 2023**

ANRE - Romanian Energy Regulatory Authority  
HHI - Herfindahl-Hirschman Index  
BRP - Balance Responsible Party  
BM - Balancing Market  
DAM - Day Ahead Market  
TSO - Transmission System Operator  
DU – Dispatchable Unit  
PN – Physical Notification  
NDC - National Dispatching Center  
C1 – The market share of the largest market participant  
C3 – Total market share of top 3 market participants  
NPS – Minimum number of residual generators  
TTC – Total Transfer Capacity  
NTC – Net Transfer Capacity  
ATC – Available Transfer Capacity  
NRA – National Regulatory Authority

According to the Commercial Code, Transelectrica, the Romanian Transmission System Operator, operates and monitors the activity of 3 types of markets: Balancing Market, Ancillary Services Market and Market for Allocation of Cross-Border Capacities.

Using the records from the markets data bases, Transelectrica prepares daily, weekly and monthly monitoring reports. A part of the data included in these reports (those data which are not confidential) are published on the website [www.transelectrica.ro](http://www.transelectrica.ro) (section Transparency).

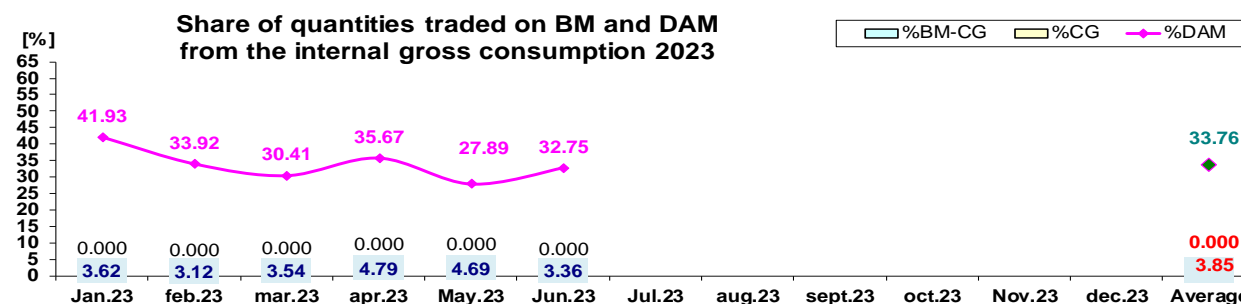
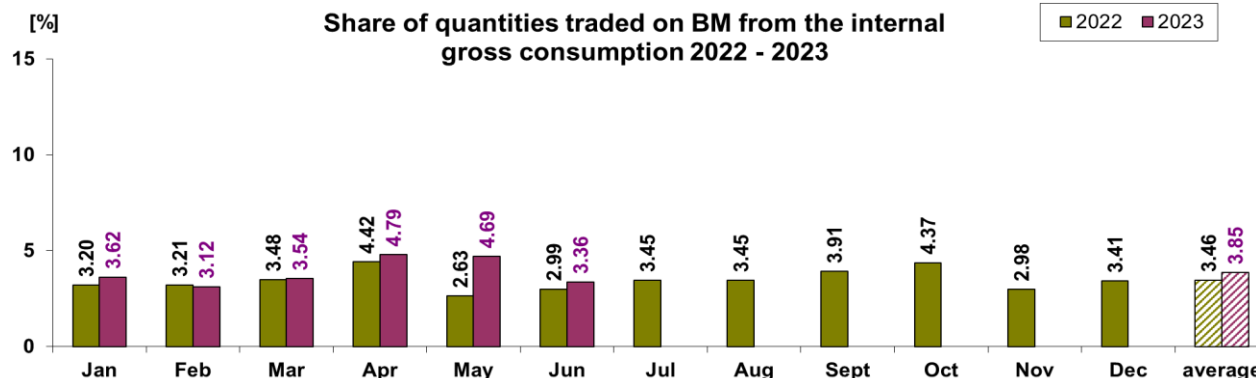
- The average monthly value of generated power was 5 938 MW and the actual internal gross consumption was 5 788 MW.
- The NDC consumption forecast was close to the actual consumption, the standard deviation being **2.02%**. Bigger differences were registered in case of consumption values resulted as the sum between notified production and total scheduled exchanges with the neighbouring power systems. In this case the standard monthly deviation value was **6.2%**. The greatest daily deviation regarding the notifications was registered on 4<sup>th</sup> of June (**16.23%**).
- The energy used in June 2023 for balancing the power system and congestion management was 140 066 MWh (with an average power of 195 MW, which means **3.63%** from the internal gross consumption).
- There was no energy used for congestion management, nor for transactions outside BM (with financial compensation).
- The energy used in June 2023 on Day Ahead Market was de 1 364 826 MWh (with an average power of 1 896 MW, which means 32.75% from the internal gross consumption). Data are shown in EET hours.
- The total cost of the energy traded on the Balancing Market was 49 371 326 lei (with an average weighted price of 352.49 lei/MWh).



# Balancing Market

## The Balance Generation / Consumption

• Monthly percentage values resulted are calculated as ratio between traded volumes on BM / outside BM with financial compensation and gross internal consumption. The annual average value was calculated as average of monthly values. (BM – Balancing Market, DAM – Day Ahead Market, BM-CG – difference between Balancing Market and traded volume on congestion).



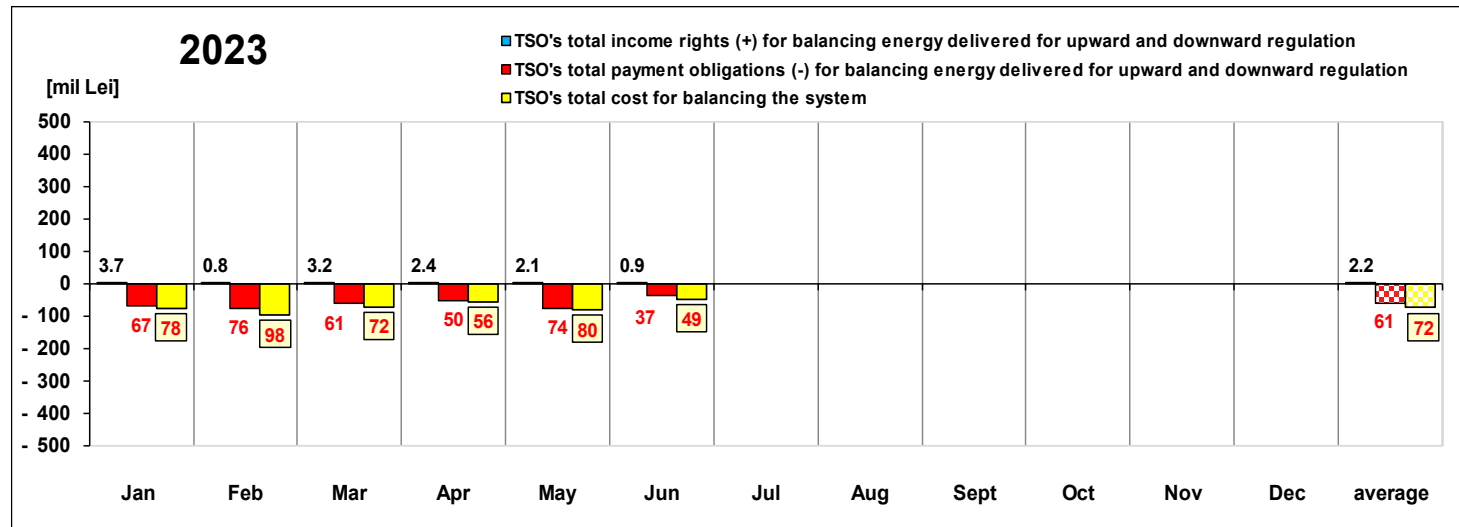
	2023												
	Jan.23	feb.23	mar.23	apr.23	May.23	Jun.23	Jul.23	aug.23	sept.23	oct.23	Nov.23	dec.23	Average
%BM	3.62	3.12	3.54	4.79	4.69	3.36						0.00	3.85
%DAM	41.93	33.92	30.41	35.67	27.89	32.75						0.00	33.76
%CG	0.000	0.000	0.000	0.000	0.000	0.000						0.000	0.000
%BM-CG	3.620	3.117	3.538	4.785	4.694	3.361						0.000	3.853
% outside BM	0.00	0.00	0.00	0.00	0.08	0.00						0.00	0.01



Transelectrica®

Societate Administrată în Sistem Dualist

# Balancing Energy Market Transactions



[Lei]		Jan	Feb	Mar	Apr	May	Jun	Jul	Aug	Sept	Oct	Nov	Dec	average	Sum
TSO's income rights / payment obligations for balancing energy delivered for downward regulation	incomes (+) prices ≥ 0	3 671 254	764 288	3 191 826	2 401 619	2 148 297	863 275							2 173 427	13 040 560
	payments (-) prices < 0	-18 058 105	-13 750 607	-2 780 494	-2 350 152	-47 431 536	-1 766 011							-14 356 151	- 86 136 904
TSO's payment obligations / income rights for balancing energy delivered for upward regulation	payments (-) prices ≥ 0	-48 959 475	-62 157 235	-57 883 797	-47 817 479	-27 021 006	-34 764 702							-46 433 949	- 278 603 692
	incomes (+) prices < 0	0	0	0	0	0	0							0	0
TSO's total income rights (+) for balancing		3 671 254	764 288	3 191 826	2 401 619	2 148 297	863 275							2 173 427	13 040 560
TSO's total payment obligations (-) for		-67 017 580	-75 907 841	-60 664 291	-50 167 631	-74 452 541	-36 530 713							-60 790 099	- 364 740 597
TSO's total cost for balancing the system		-78 018 832	-97 917 681	-71 922 686	-55 930 994	-80 062 808	-49 361 669							-72 202 445	- 433 214 671
Value of transactions outside BM (with		0	0	0	- 66 398	- 14 919	0							- 13 553	- 81 317
Congestion Cost on BM		0	0	0	0	0	0							0	0
Congestion Cost outside BM		0	0	0	- 88 286	0	0							- 14 714	- 88 286

\* The annual average value was obtained as arithmetic average of the monthly values.

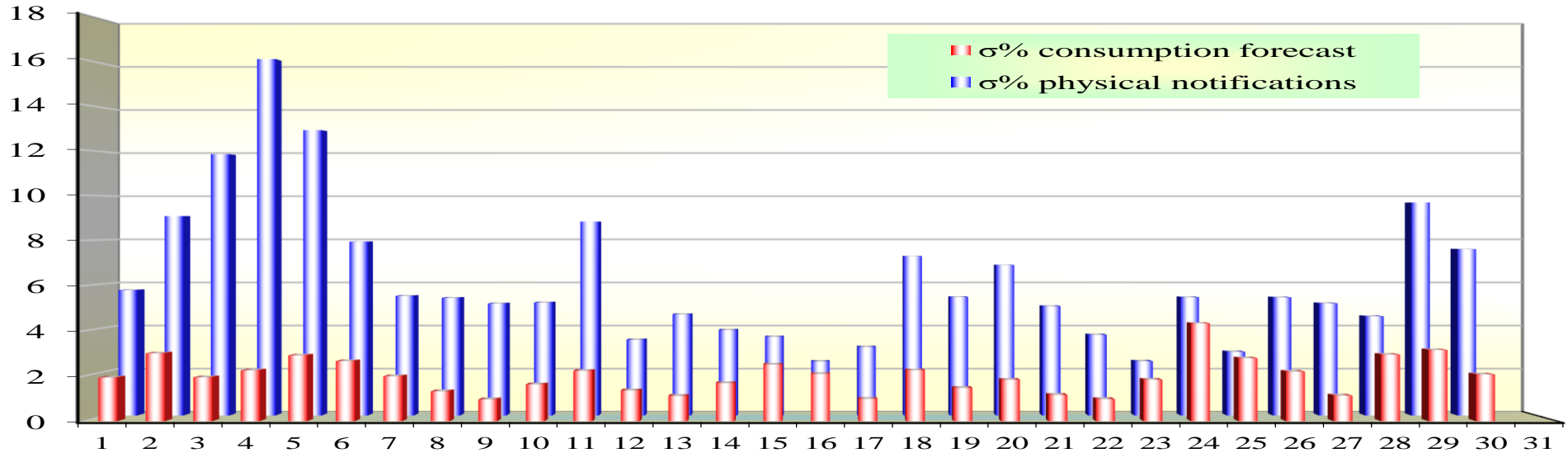
Public



Transelectrica®  
Societate Administrată în Sistem Dualist

# Balancing Market

Standard deviation of physical notifications and consumption forecast against the actual consumption in June 2023



Jun 2023

Day	1	2	3	4	5	6	7	8	9	10	11	12	13	14	15	16	17	18	19	20	21	22	23	24	25	26	27	28	29	30
σ% consumption forecast	1.93	3.00	1.94	2.25	2.91	2.66	1.99	1.32	0.96	1.63	2.23	1.36	1.12	1.68	2.51	2.09	0.98	2.25	1.47	1.83	1.16	0.97	1.83	4.33	2.78	2.19	1.13	2.95	3.15	2.07
σ% physical notifications	5.71	9.08	11.89	16.23	12.99	7.91	5.44	5.35	5.10	5.14	8.82	3.44	4.60	3.89	3.58	2.45	3.12	7.25	5.39	6.84	4.97	3.67	2.47	5.38	2.89	5.38	5.11	4.51	9.70	7.57

σ<sub>medie</sub>% prognoză consum = 2.02

σ<sub>medie</sub>% notificări = 6.20

$$\sigma_{average\%consumptionforecast} = \sqrt{\frac{\frac{1}{n} \sum_{i=1}^n (R - P)^2}{\bar{R}}} \cdot 100$$

$$\sigma_{average\%notifications} = \sqrt{\frac{\frac{1}{n} \sum_{i=1}^n (R - N)^2}{\bar{R}}} \cdot 100$$

**R = Realized Consumption;**

**N = Physical Notifications;**

**P = Consumption Forecast.**

Public







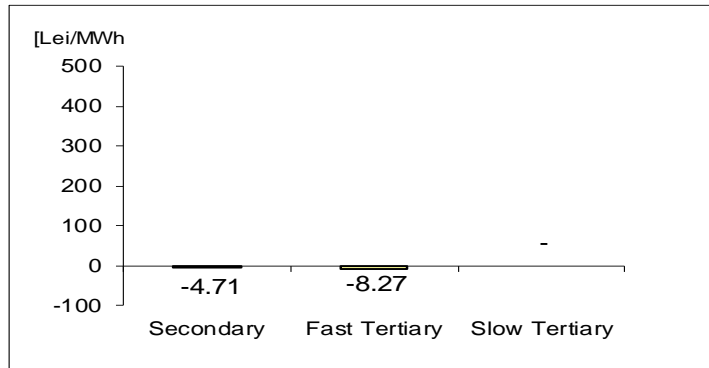
Transelectrica®  
Societate Administrată în Sistem Dualist

June 2023

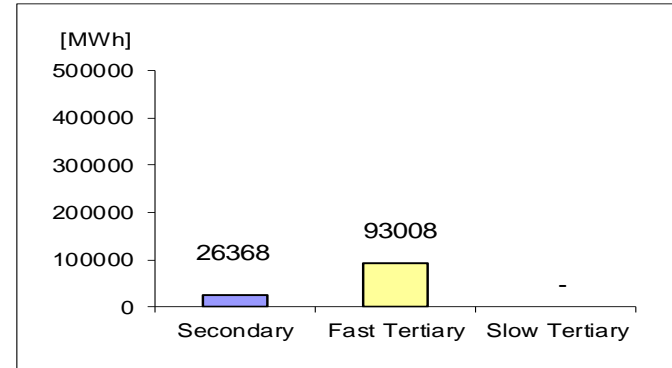
# Balancing Market

## Balancing energy – Selected prices and quantities in June 2023

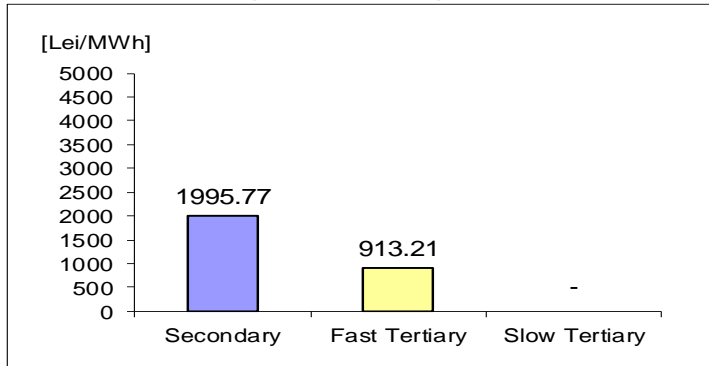
Downward regulation - average price [lei/MWh]



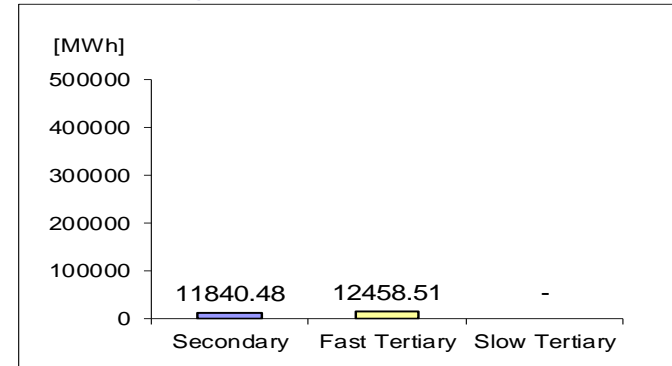
Downward regulation - selected quantities



Upward regulation - average price [lei/MWh]



Upward regulation - selected quantities



$$\text{Price}_{\text{average weighted, regulation type, direction}} = \frac{\sum (Q_{i,j} * P_{i,j})}{\sum Q_{i,j}}$$

where  $Q_{i,j}$ ,  $P_{i,j}$  represents the quantity, respectively the price of the energy selected, corresponding to the selected transaction  $j$  in the dispatching interval  $i$ .

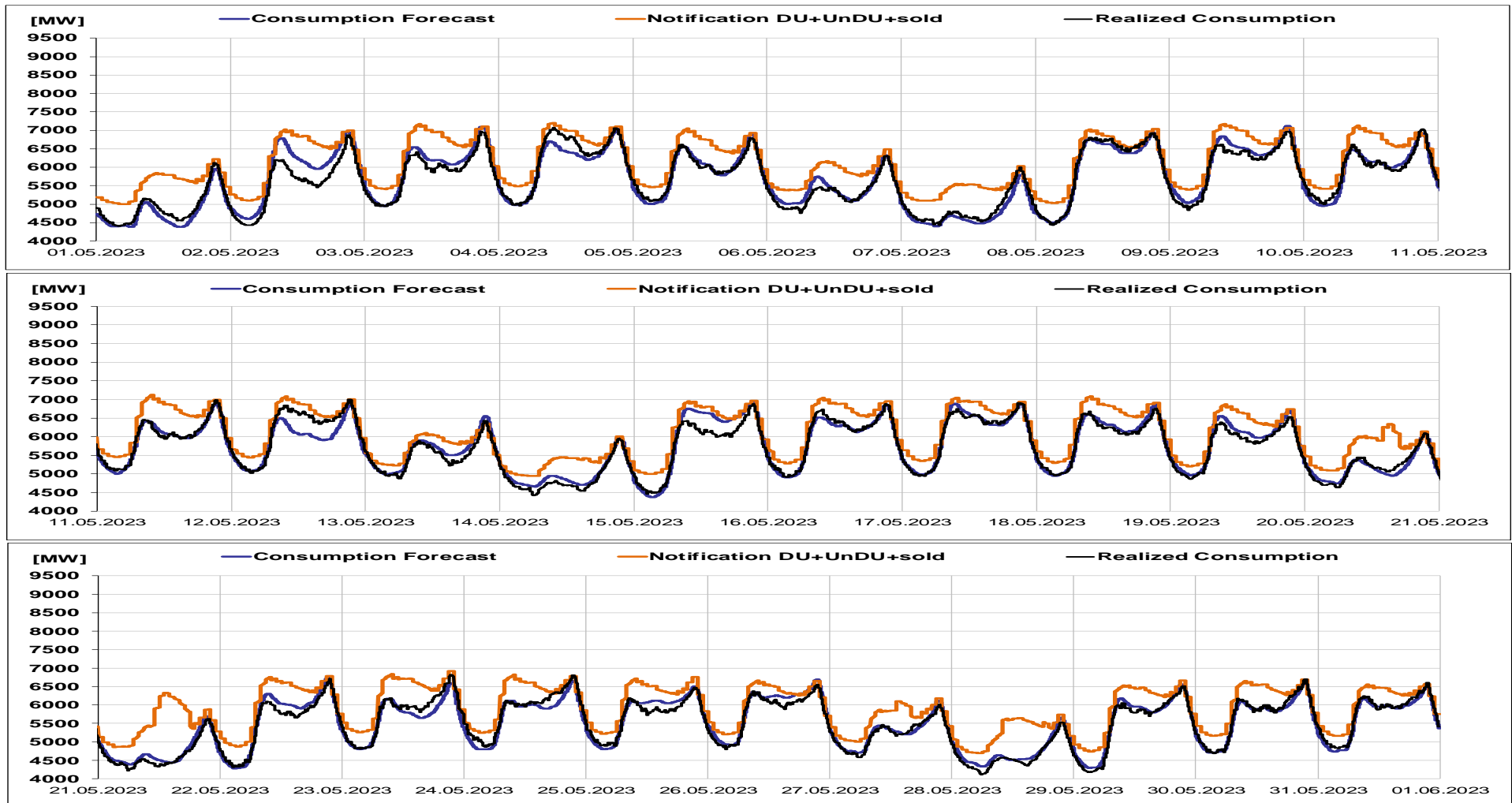


Transelectrica®

Societate Administrată în Sistem Dualist

# Balancing Market

## Realized consumption, forecast, notifications in D-1



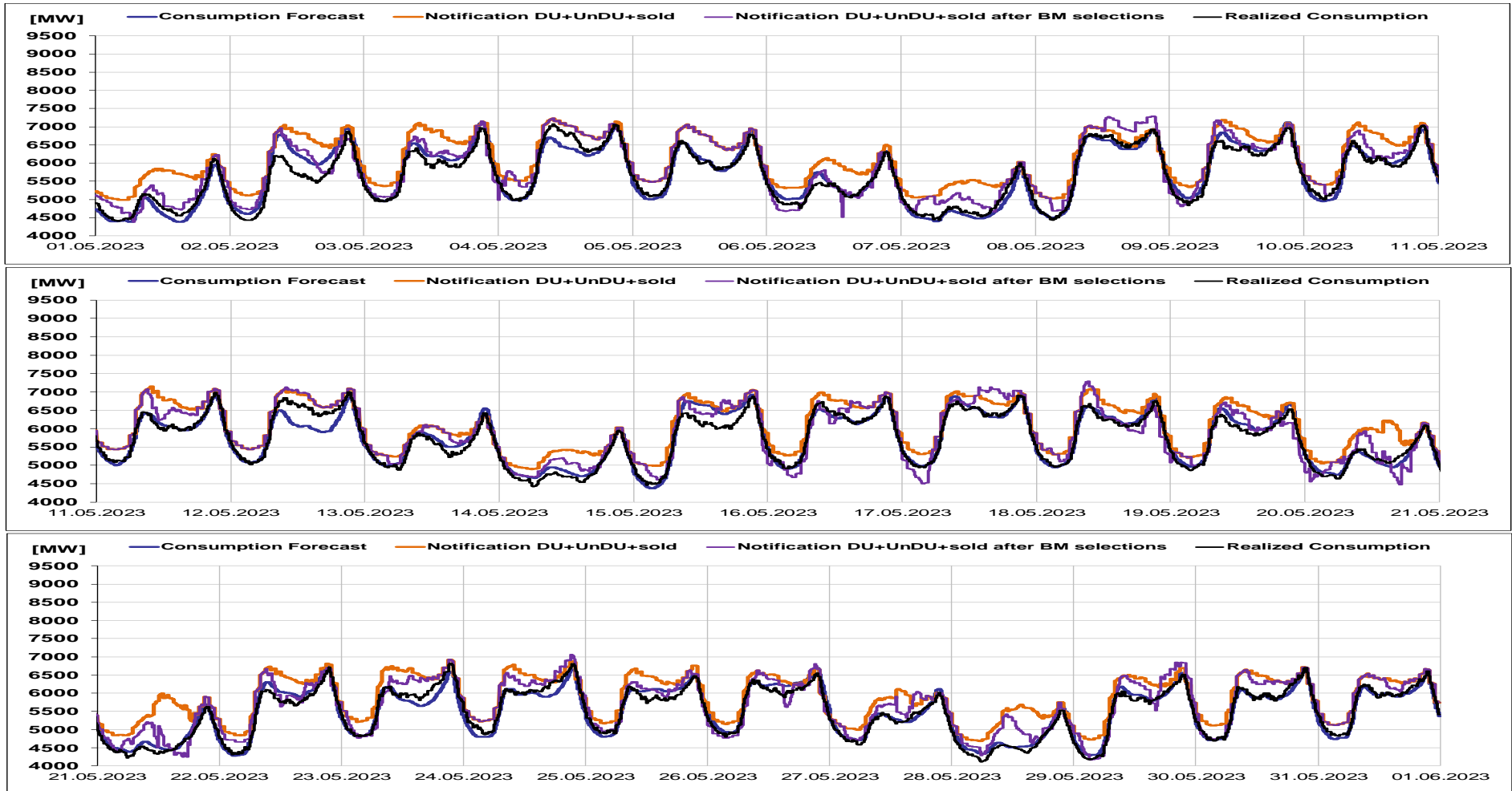


Transelectrica®

Societate Administrată în Sistem Dualist

# Balancing Market

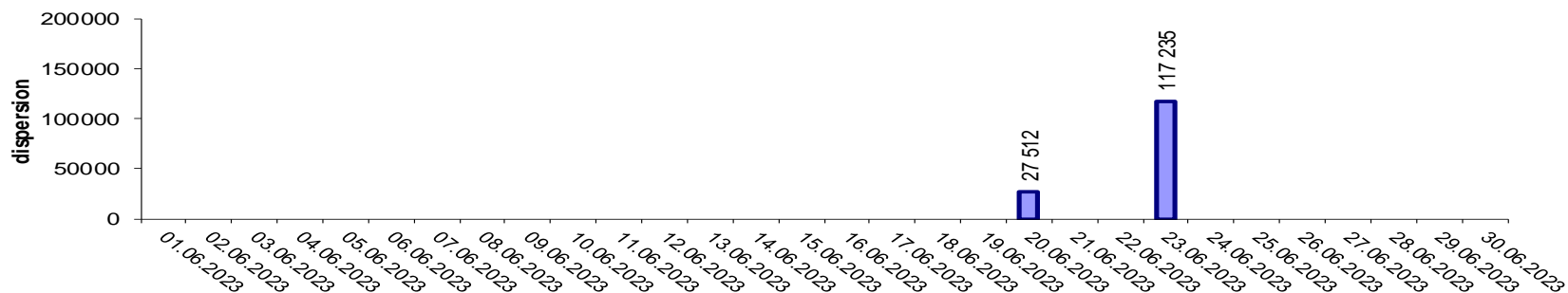
Realized consumption, forecast, notifications, notifications after BM selections in D (end of delivery day)



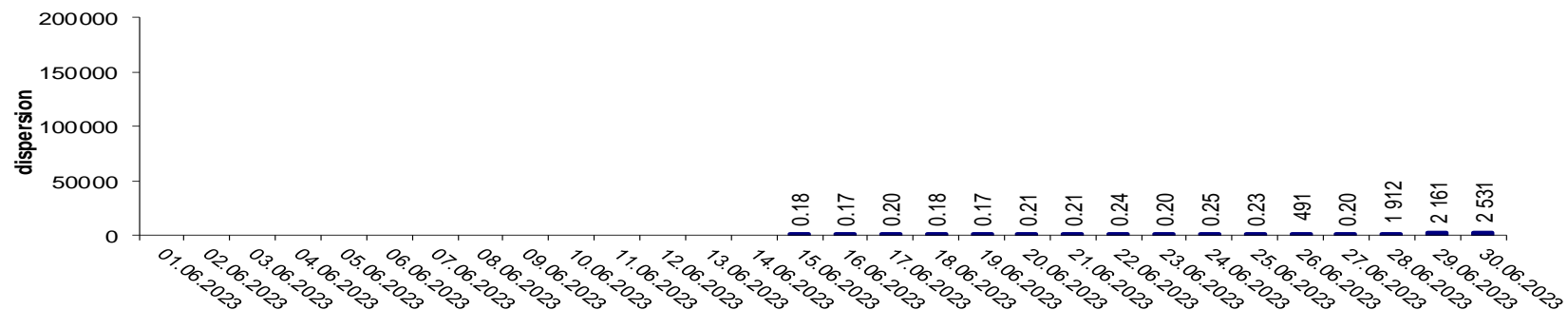
# Balancing Market

## Indicators – Price Volatility for Secondary Regulation

**Price Volatility for Secondary Upward Regulation**



**Price Volatility for Secondary Downward Regulation**



**Volatility = price dispersion on studied interval:**

$$\frac{1}{n-1} \sum_{i=1}^n (x_i - \bar{x})^2$$



**Email: [Monitorizare.Piata@transelectrica.ro](mailto:Monitorizare.Piata@transelectrica.ro)**

**Fax: 021 3035630**