



Transelectrica®
Societate Administrată în Sistem Dualist

MARKET MONITORING REPORT

Balancing Market

March 2020

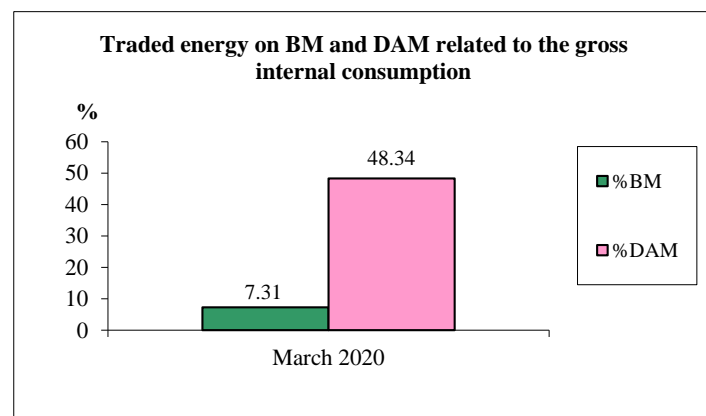
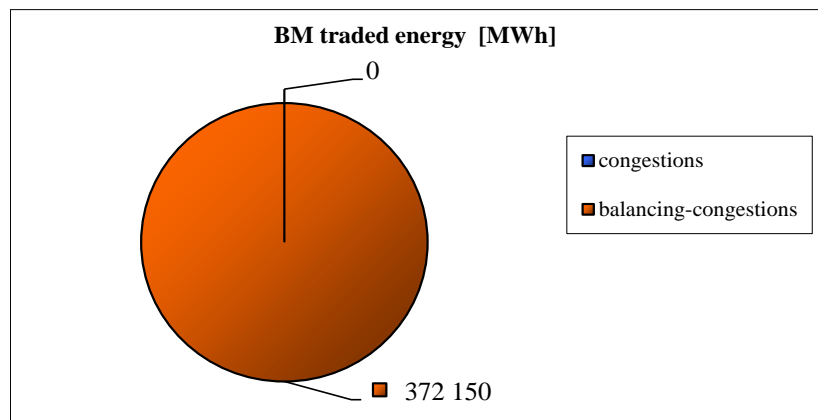
ANRE - Romanian Energy Regulatory Authority
HHI - Herfindahl-Hirschman Index
BRP - Balance Responsible Party
BM - Balancing Market
DAM - Day Ahead Market
TSO - Transmission System Operator
DU – Dispatchable Unit
PN – Physical Notification
NDC - National Dispatching Center
C1 – The market share of the largest market participant
C3 – Total market share of top 3 market participants
NPS – Minimum number of residual generators
TTC – Total Transfer Capacity
NTC – Net Transfer Capacity
ATC – Available Transfer Capacity

According to the Commercial Code, Transelectrica, the Romanian Transmission System Operator, operates and monitors the activity of 3 types of markets: Balancing Market, Ancillary Services Market and Market for Allocation of Cross-Border Capacities.

Using the records from the markets data bases, Transelectrica prepares daily, weekly and monthly monitoring reports. A part of the data included in these reports (those data which are not confidential) are published on the website www.transelectrica.ro (section Transparency).

The Balance Generation/Consumption

- The average monthly value of generated power was 6 836 MW and the actual internal gross consumption was 6 854 MW.
- The NDC consumption forecast was close to the actual consumption, the standard deviation being **2.10%**. Bigger differences were registered in case of consumption values resulted as the sum between notified production and total scheduled exchanges with the neighbouring power systems. In this case the standard monthly deviation value was **4.95%**. The greatest daily deviation regarding the notifications was registered in **29.03 (11.02%)**.
- The energy used in March 2020 for balancing the power system and congestion management was 372 150 MWh (with an average power of 501 MW, which means **7,31%** from the internal gross consumption). No transactions were made for congestion management.
- The energy traded in March 2020 on Day Ahead Market was 2 461 734 MWh (with an average power of 3 313 MW, which means **48.34%** from the internal gross consumption). Data are shown in EET hours.
- The total cost of the energy traded on the Balancing Market was 15 820 434 lei (with an average weighted price of 43lei/MWh), from which:
 - the cost of the energy paid by C.N.T.E.E. Transelectrica S.A. for balancing was de 15 820 434 lei (from which startup cost 0 lei);
 - the cost of the energy paid by C.N.T.E.E. Transelectrica S.A. for congestion management was 0 lei.





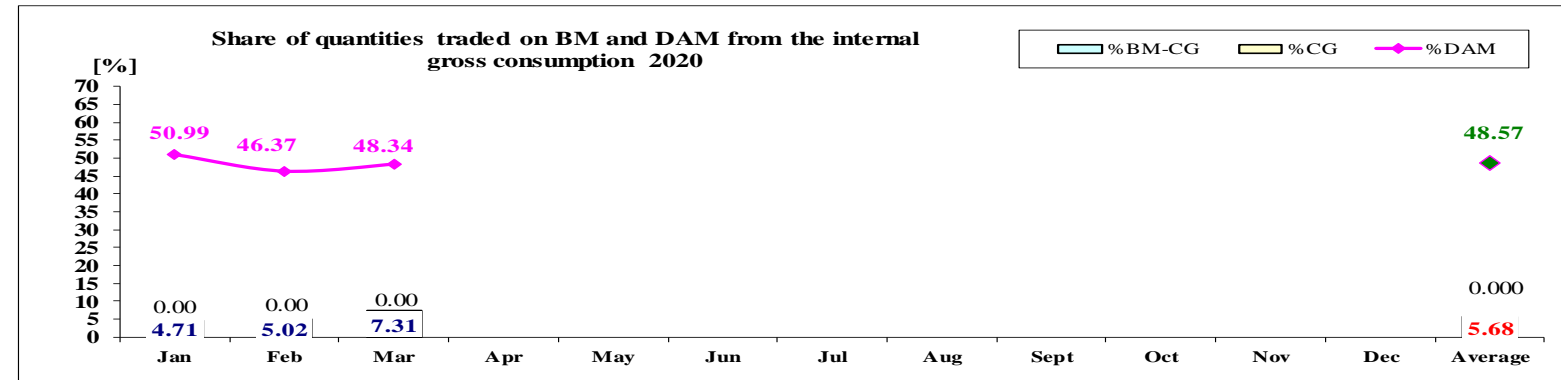
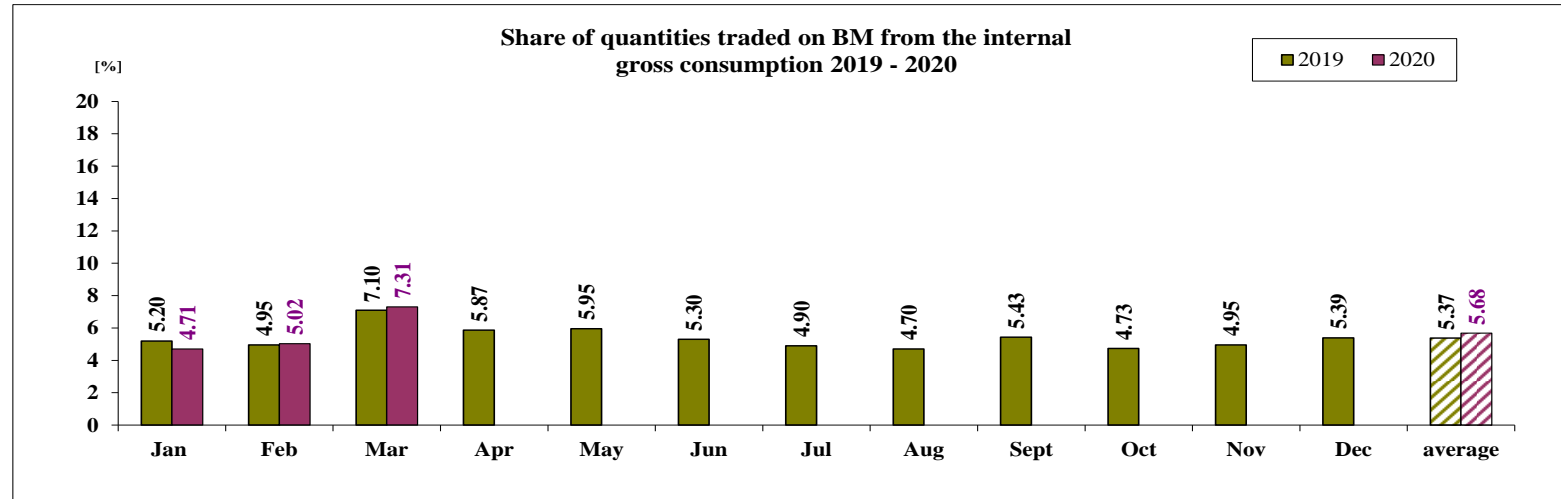
Transelectrica®

Societate Administrată în Sistem Dualist

Balancing Market

The Balance Generation / Consumption

• Monthly percentage values resulted are calculated as ratio between traded volumes on BM and gross internal consumption. The annual average value was calculated as average of monthly values. (BM – Balancing Market, DAM – Day Ahead Market, BM-CG – difference between Balancing Market and traded volume on congestion).



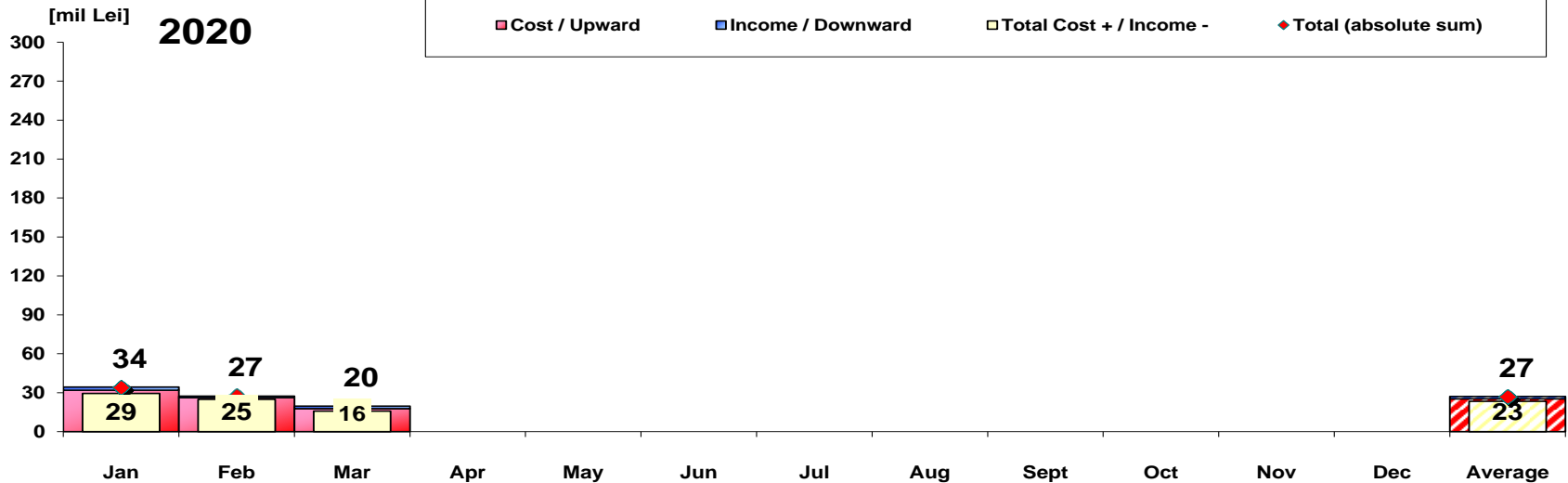
2020												
	Jan	Feb	Mar	Apr	May	Jun	Jul	Aug	Sept	Oct	Nov	Dec
%BM	4.71	5.02	7.31									
%DAM	50.99	46.37	48.34									
%CG	0.00	0.00	0.00									
%BM-CG	4.71	5.02	7.31									
Average												



Transelectrica®

Societate Administrată în Sistem Dualist

Balancing Energy Market Transactions



[Lei]	Jan	Feb	Mar	Apr	May	Jun	Jul	Aug	Sept	Oct	Nov	Dec	Average	Total
Cost / Upward	31 888 098	26 145 180	17 762 040										25 265 106	75 795 318
Income / Downward	2 431 458	1 215 818	1 941 606										1 862 961	5 588 882
CE Cost	0	0	0										0	0
Cost for energy traded on the Balancing Market (includes startup cost)	29 456 640	24 929 362	15 820 434										23 402 145	70 206 435
Cost+/Income- (BE and CE)	29 456 640	24 929 362	15 820 434										23 402 145	70 206 435
Total (absolute sum) (BE and CE)	34 319 556	27 360 998	19 703 646										27 128 067	81 384 200

CE – Congestion Energy

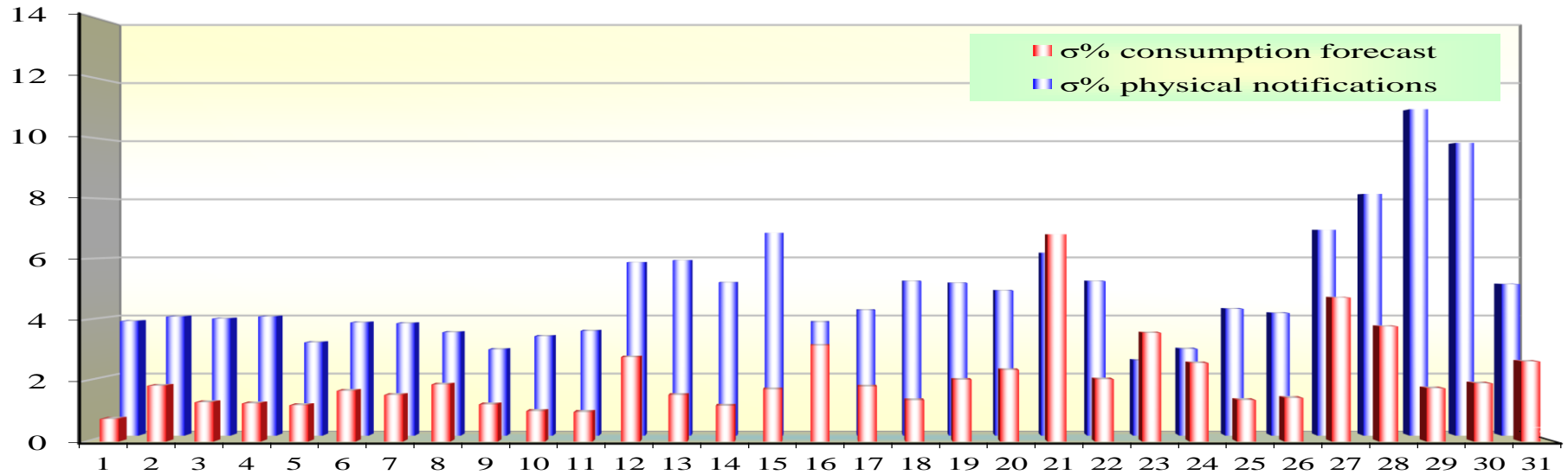
* The average annual value of BM transactions (the absolute sum of upward and downward transactions) was calculated as average of monthly values.



Transelectrica®
Societate Administrată în Sistem Dualist

Balancing Market

Standard deviation of physical notifications and consumption forecast against the actual consumption in March 2020



March 2020

Day	1	2	3	4	5	6	7	8	9	10	11	12	13	14	15	16	17	18	19	20	21	22	23	24	25	26	27	28	29	30	31
σ% consumption forecast	0.74	1.84	1.29	1.26	1.20	1.67	1.53	1.88	1.22	1.00	0.97	2.78	1.53	1.18	1.72	3.16	1.81	1.36	2.03	2.35	6.80	2.05	3.57	2.58	1.36	1.43	4.73	3.78	1.75	1.91	2.63
σ% physical notifications	3.87	4.02	3.96	4.02	3.15	3.82	3.80	3.49	2.91	3.36	3.54	5.85	5.92	5.17	6.85	3.84	4.24	5.22	5.15	4.90	6.17	5.22	2.54	2.93	4.28	4.14	6.95	8.16	11.02	9.88	5.11

$$\sigma_{\text{average\% consumption forecast}} = \frac{\sqrt{\frac{1}{n} \sum_{i=1}^n (R - P)^2}}{R} \cdot 100$$

σ_{average% consumption forecast} = 2.10

σ_{average % physical notifications} = 4.95

$$\sigma_{\text{average\% notifications}} = \frac{\sqrt{\frac{1}{n} \sum_{i=1}^n (R - N)^2}}{R} \cdot 100$$

R = Realized Consumption;

N = Physical Notifications;

P = Consumption Forecast.

Public

Balancing Market

Balancing energy – Selected prices and quantities

- At the beginning of the month on the Balancing Market operated 69 BRPs, 110 market participants, holding 204 commercially operating dispatchable units.

March 2020

Downward regulation

Downward regulation	Prices [lei/MWh]			Quantities [MWh]			Participants						
	Monthly	Maximum	Minimum	Total	Actually	Deviation	C1	C3	C1	C3	HHI	HHI	
	average			selected	delivered	%	Number	(selected)	(actually delivered)	(selected)	(actually delivered)		
Secondary	0.10	0.10	0.10	56612.35	56612.35	0.00%	5	59.30%	98.10%	59.30%	98.10%	4305	4305
Fast Tertiary	5.16	755.81	0.10	262456.49	252804.55	3.68%	10	50.09%	87.62%	50.54%	88.29%	3347	3401
Slow Tertiary	24.18	673.00	0.10	26928.58	26859.66	0.26%	7	81.99%	96.38%	82.14%	96.48%	6845	6868
				345997.42	336276.57	2.81%							

Upward regulation

	Monthly	Maximum	Minimum	Total	Actually	Deviation	C1	C3	C1	C3	HHI	HHI	
	average			selected	delivered	%	Number	(selected)	(actually delivered)	(selected)	(actually delivered)	(actually delivered)	
Secondary	604.26	757.73	455.56	22688.96	22688.96	0.00%	5	58.70%	98.38%	58.70%	98.38%	4284	4284
Fast Tertiary	307.28	678.02	1.00	13466.81	13184.51	2.10%	9	50.82%	94.61%	50.80%	94.84%	4305	4332
Slow Tertiary	0.16	10.00	0.10	0.32	0.16	50.93%	2	92.59%	100.00%	100.00%	100.00%	8628	10000
				36156.10	35873.63	0.78%							



Transelectrica®

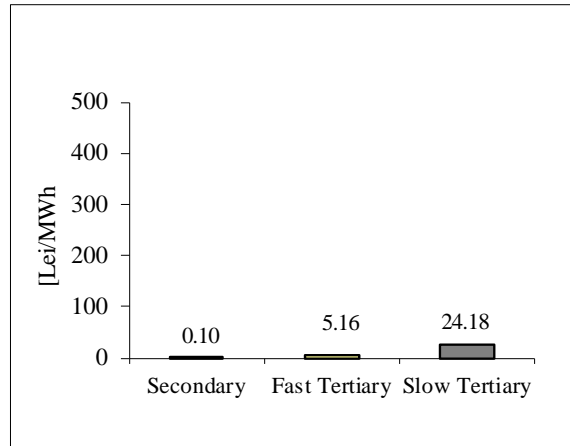
Societate Administrată în Sistem Dualist

Balancing Market

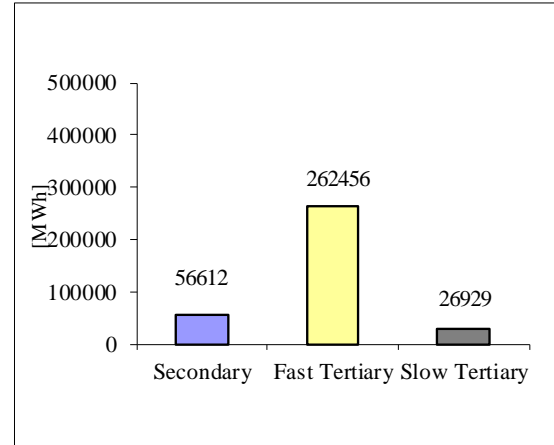
Balancing energy – Selected prices and quantities in March 2020

March 2020

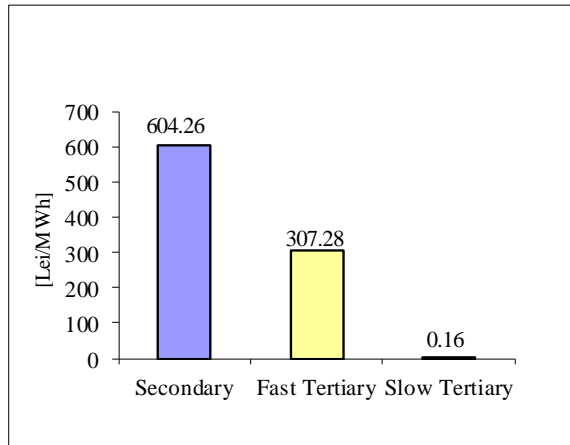
Downward regulation - average price [lei/MWh]



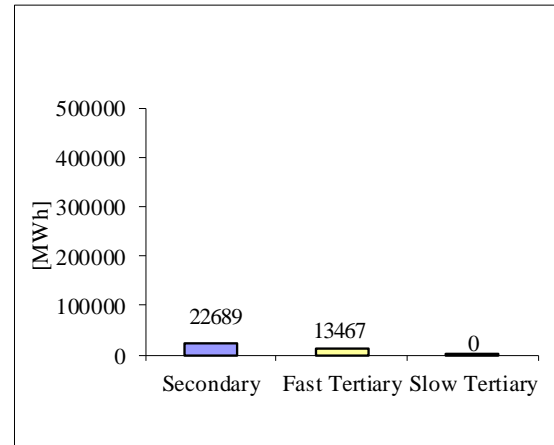
Downward regulation - selected quantities [MWh]



Upward regulation - average price [lei/MWh]



Upward regulation - selected quantities [MWh]



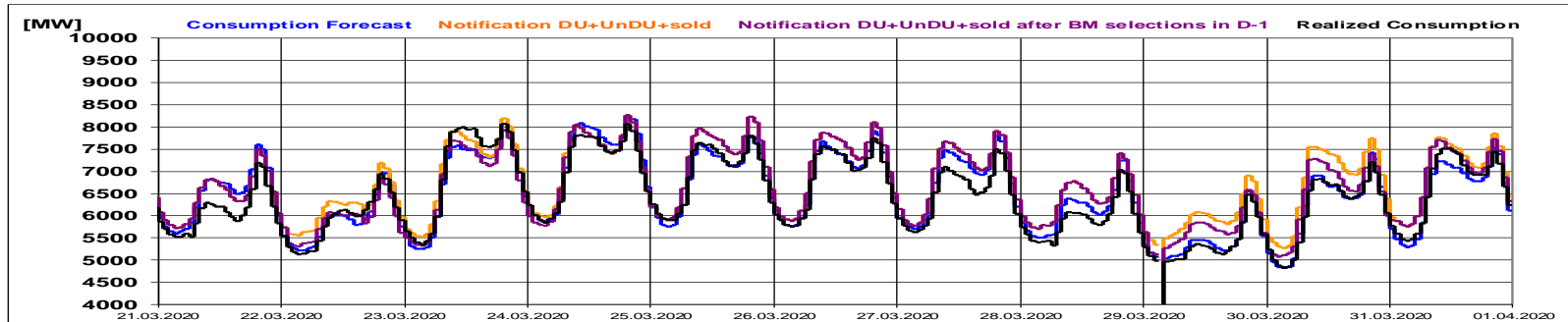
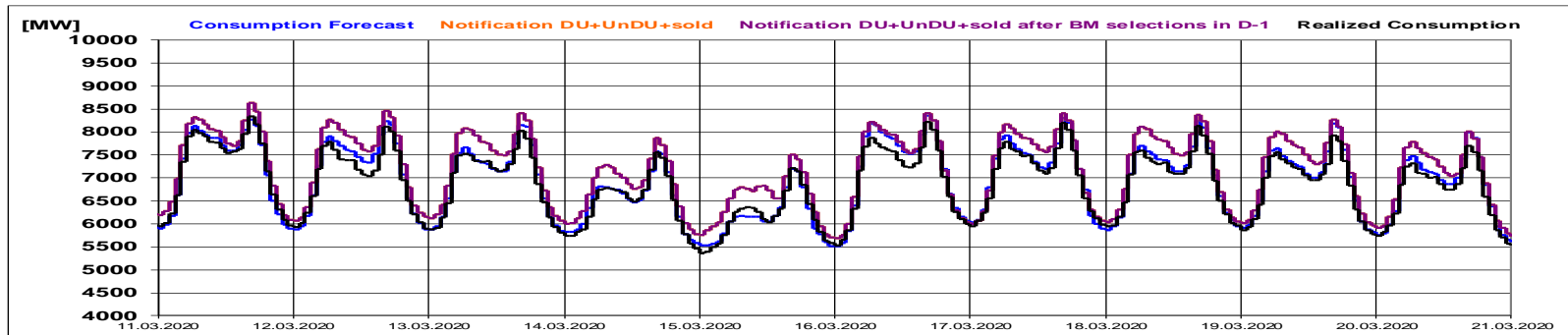
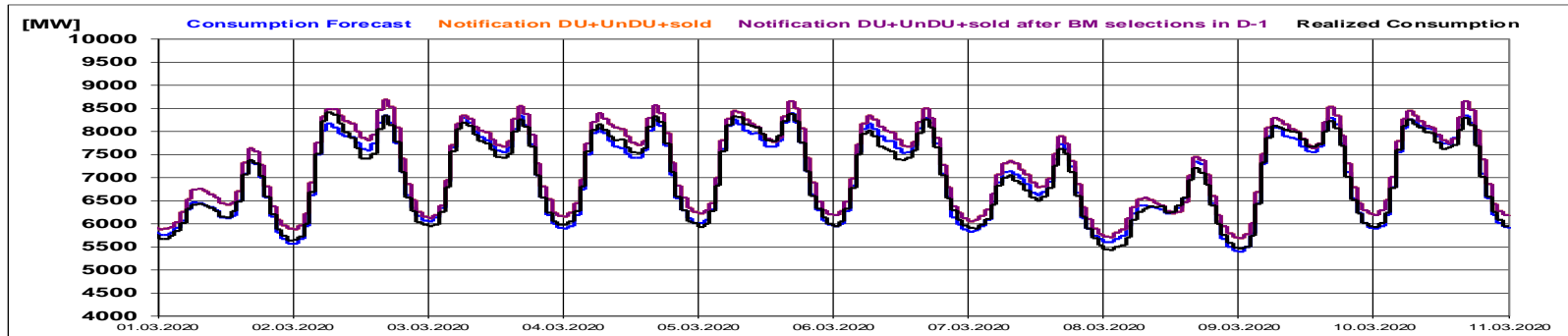


Transelectrica®

Societate Administrată în Sistem Dualist

Balancing Market

Realized consumption, forecast, notifications,
notifications after BM selections in D-1



Public

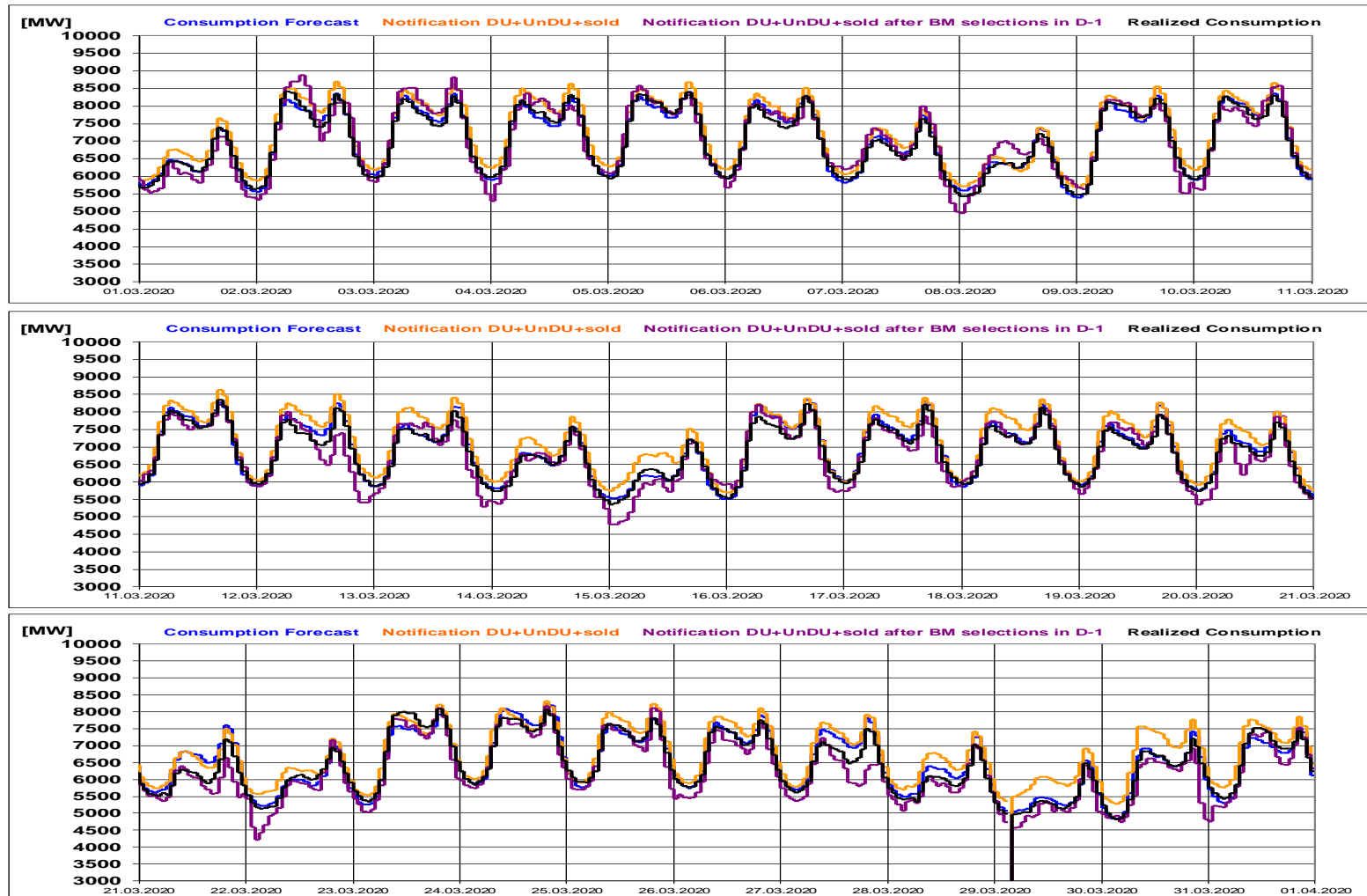


Transelectrica®

Societate Administrată în Sistem Dualist

Balancing Market

Realized consumption, forecast, notifications, notifications after BM selections in D (end of delivery day)



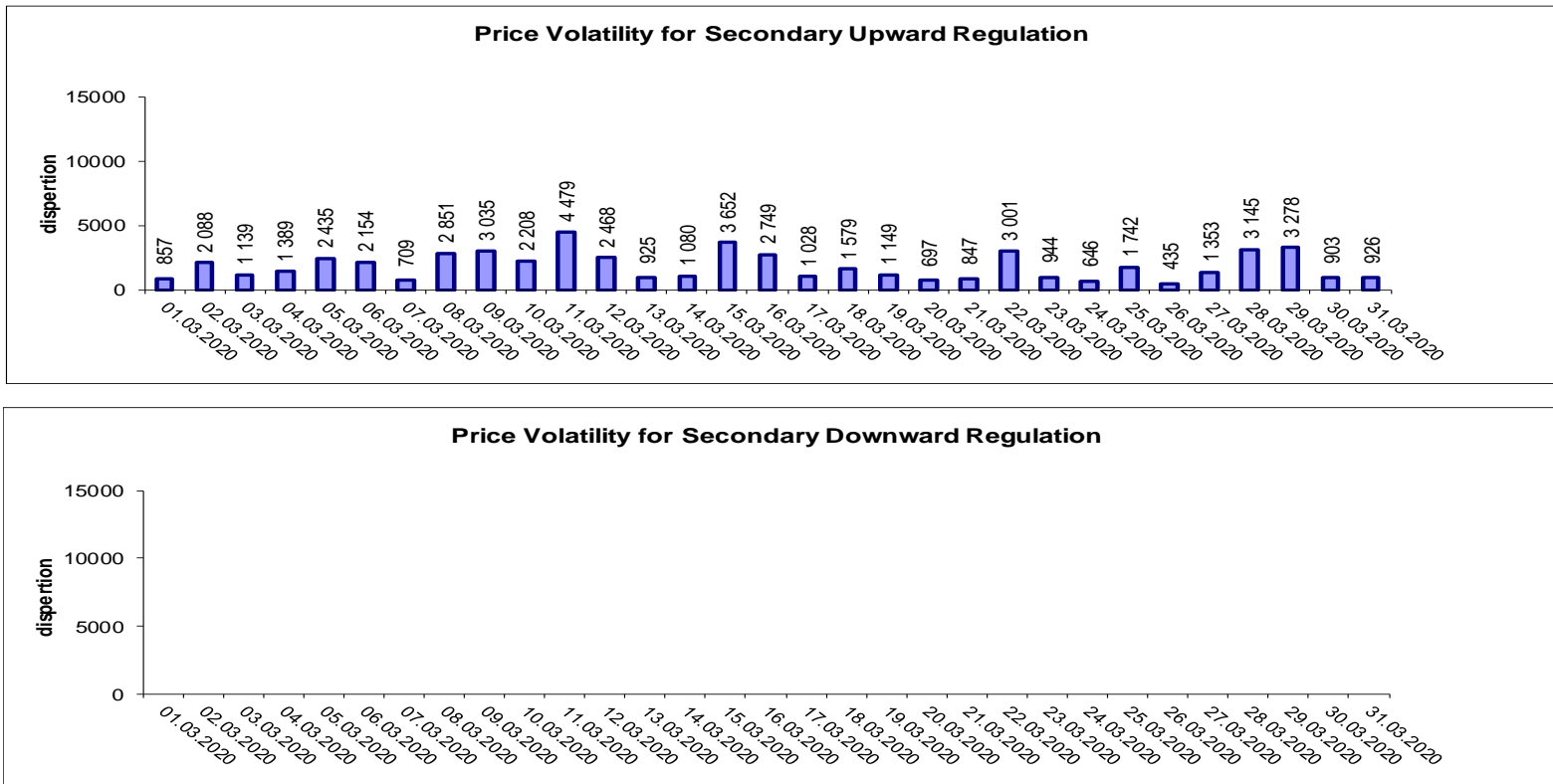


Transelectrica®

Societate Administrată în Sistem Dualist

Balancing Market

Indicators – Price Volatility for Secondary Regulation



Price volatility for Secondary Downward Regulation, determined as the daily price dispersion, recorded zero values throughout the month, because of constant price values from one hour to the next.

Volatility = price dispersion on studied interval:

$$\frac{1}{n-1} \sum_{i=1}^n (x_i - \bar{x})^2$$



Email: Monitorizare.Piata@transelectrica.ro

Fax: 021 3035630